

## Update on Health Capital Projects as at 31 July 2025

<b>Due to MO:</b>	18 September 2025	<b>Reference</b>	HNZ00096977
<b>To:</b>	Hon Simeon Brown, Minister of Health		
<b>From:</b>	Jeremy Holman, Chief Infrastructure and Investment Officer		
<b>Copy to:</b>	Hon Christopher Bishop, Minister for Infrastructure Hon Matt Doocey, Minister for Mental Health		
<b>Security level:</b>	In Confidence	<b>Priority</b>	Routine
<b>Consulted</b>	Ministry of Health		
<b>Proactive Release:</b>	This title is proposed by Health NZ for proactive release		

### Contact for further discussion (if required)

Name	Position	Phone	1st contact
Jeremy Holman	Chief Infrastructure and Investment Officer		x
Zainab Abbas	Head of Office of the Chief Infrastructure and Investment Officer		

### Attachments

Appendix 1: Health Capital Update Monthly Dashboard as at 31 July 2025

## Purpose

1. This Aide-Mémoire provides you with monthly routine reporting on the health infrastructure portfolio, including the Health Capital Update Dashboard (“dashboard” attached as Appendix 1).

## Summary

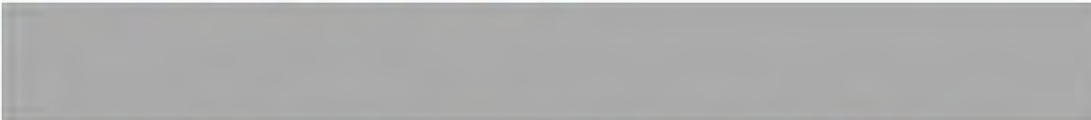
2. Health New Zealand | Te Whatu Ora (Health NZ) is delivering approximately 1,000 physical infrastructure capital projects across New Zealand. The dashboard focuses on 64 projects that are over \$10 million in budget or funded from the Health Capital Envelope (HCE).
3. Last month we reported on the number of projects that have reached completion (HNZ00091332 refers). This has been amended to a total of 16 major and HCE funded projects completed in the last 12 months with a total budget of \$353 million. 42 projects with an overall value of \$1,150 million have achieved practical completion since the establishment of Health NZ. This amendment is due to revised data inputs, as we work to produce nationally consistent data reporting from across the former DHBs.
4. Table 1 below shows the overall status of the 64 projects. The project RAG status changes from June 2025 to July 2025 are as follows:
  - a) The total number of monitored projects decreased from 66 to 64 after the two New Dunedin Hospital projects were excluded entirely. New Dunedin Hospital projects will be re-included in future routine reporting.
  - b) 
  - c) Two nationwide projects are unrated and will remain so until they begin assurance reporting. These are the Interim Inpatient Bed Capacity and the Nationwide Remediation Programme.
  - d) Two projects changed RAG status from Green to Amber: Renewal of Vertical Transport (Lifts), Wellington - Tranche 2 and Urgent Interim Works, Dunedin.

Table 1 Project RAG status as at 31 July 2025

	Green rated projects	Amber rated projects	Red rated projects	Unrated	Total
Number of Projects	30	26	6	2	64
\$ value	\$2,000 m	\$2,508 m	\$860 m	\$190 m	\$5,558 m
Net Movement	+1	+2	-	-5	-2

5. Changes to the Health Capital Update format this month include:
  - a) A Benefits Realisation section outlining findings of project benefits realisation based on the recently submitted Project Completion and Post Implementation Reports.

b) A new Budget 2025 Projects section summarising progress on the six projects funded from Budget 2025 tagged contingency.

c)

## Ministerial Health Infrastructure Committee Reporting

6. The Ministerial Health Infrastructure Committee met on 12 September 2025 to consider advice on:

a)

b)

c) Health Infrastructure Plan and the Implementation plan.

d) The Major Project Delivery Partners Panel and Design and Technical Advisory Consortia.

e) Reporting on the Status of the top 10 projects (by capital cost – project summary included in table 2) and the Health Capital Update as at 30 June 2025.

7. The Ministerial Health Infrastructure Committee will provide considerations to you directly.

Table 2: Major Projects \*(by value)

Project	Region	Cost	Completion date
Pihi Kaha Whangārei Hospital	Northern	\$759 million	August 2031
E Tū Wairua Hinengaro – Forensic Psychiatric Services Facilities Replacement, Mason Clinic	Northern	\$193 million	November 2025
Facilities Infrastructure Remediation Programme Tranche 1	Northern	\$309 million	July 2026
Facilities Infrastructure Remediation Programme Tranche 2	Northern	\$361.8 million	December 2025
Manukau Superclinic expansion and planned care capacity increase, Manukau Health Park	Northern	\$317 million	December 2027
Project Maunga – Taranaki Base Hospital	Midlands   Te Manawa Taki	\$463 million	December 2025
Wellington Hospital Emergency Department Refurbishment (Front of Whare)	Central   Te Ikaroa	\$244 million	May 2030
Whangatapuranga Nelson Hospital	South Island   Te Waipounamu	\$619 million	December 2030
Christchurch Hospital Redevelopment, Tower 3	South Island   Te Waipounamu	\$183.5 million	October 2026

Project	Region	Cost	Completion date
New Dunedin Hospital (Outpatient Building)	South Island   Te Waipounamu		July 2026

## Upcoming construction dates

- Table 3 below provides a list of upcoming construction start or completion dates for the next three months. These dates are based on the latest information available from project teams and may differ slightly from the dates in the dashboard which are based on July assurance reports.
- Two projects (30024 and 10240) that anticipated practical completion dates in August are now reporting completion dates in September, but without any adverse impact on budget.

Table 3 Upcoming key construction dates<sup>1</sup>

Project	Type	Description	Planned Date
Boiler Replacement, Wairau Hospital, Blenheim (30024)	Practical Completion	Replacement of boilers with an energy efficient, sustainable option.	September 2025
Renewal of Vertical Transport (Lifts) - Tranche 2, Wellington (10240)	Practical Completion & Go Live	Renewal of failing lifts in seven buildings across Wellington Regional Hospital.	September 2025
Acute Adult Mental Health Facility, Palmerston North Hospital (10020)	Go Live	New build of Acute Adult Mental Health facility currently on the main campus.	October 2025
Kidz First and McIndoe Building Recladding, Middlemore Hospital (10210)	Construction Start	Stage 2 of the recladding programme to address leaky building and cladding issues.	October 2025
Dunedin Hospital Sterile Services Unit (SSU) (10261)	Construction Start	Development of a temporary facility for sterile services at Dunedin hospital to operate until a permanent facility is established in the New Dunedin Hospital Inpatient Building.	October 2025
Temporary In-patient Unit, Hawke's Bay Hospital (10266)	Construction Start	A new prefabricated 28 bed inpatient unit to accommodate surgical beds relocated out of the main tower ward block.	October 2025
Procedure Rooms Upgrade, Hawke's Bay Hospital (30013)	Practical Completion	Construction on a third procedure room and completion of some minor works to support the improved operation of the unit.	October 2025
Taranaki Base Hospital Linear Accelerators (102117)	Practical Completion & Go-Live	Replacement of Linac and Bunker as part of regional services.	October 2025 & November 2025

<sup>1</sup> Small incremental changes to programmes occasionally occur month on month which have no impact on the overall project scope or budget. This is because the closer the end date is the more accurate our forecasting becomes. Programme changes that do have a significant impact are reported in the Dashboard and Annex One.

Project	Type	Description	Planned Date
Linear Accelerators Replacement, Auckland City Hospital (10271)	Delivery Start	Replacement of two end-of-life linear accelerators, and upgrade facilities and information system infrastructure.	November 2025
E Tū Wairua Hinengaro - Forensic Psychiatric Services Facilities Replacement, Mason Clinic, Auckland (10050)	Practical Completion	Replacement of four units and 60 inpatient beds at the Mason Clinic in Auckland (includes Tranches 1A and 1B).	November 2025
Mauri Ora - Mental Health and Addictions Inpatient Facility Replacement (10075)	Practical Completion	Replacement and capacity expansion of current mental health facility. Two additional beds on completion and four more available in the future.	November 2025
Regional Network Remediation, Northern Region (10227)	Go-Live	Replacement of 826 end-of-life network devices.	November 2025

## Next steps

10. Health NZ will provide you with monthly reporting, including the Health Capital Update Dashboard based on August 2025 assurance reporting in advance of your October meeting with officials.
11. We will work with your office to proactively release the dashboard on our website.

# Appendix 1: Health Capital Update Monthly Dashboard as at 31 July 2025



# *Health Capital Update Monthly Dashboard*

as at 31 July 2025

# Health Infrastructure Portfolio

as at 31 July 2025

Section 1: Overall Summary

Section 2: Project Health Status

Section 3: Go to Green Plan

Section 4: Financial Summary

Section 5: Strategic Alignment

Section 6: Budget 2025 Projects

Section 7: Budget 2026 Business Cases

Section 8: Major Programmes

Section 9: Schedule

Section 10: Benefits Realisation

Section 11: Performance Measures

Section 12: Project Lifecycle

Annexes

Monitored Project Count

Total Monitored Project Fund

Projects in RED RAG Status



64



\$5,558 m



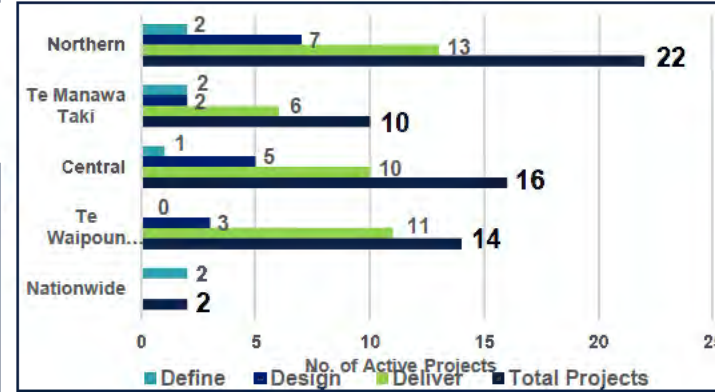
6

Portfolio Highlights

- The Infrastructure and Investment Group (IIG) is delivering approximately 1,000 capital projects across New Zealand. This report focuses on the 64 monitored projects that are over \$10 million or are funded from the Health Capital Envelope (HCE).
- The number of projects with Red RAG status remains the same as last month at six.
- Waitakere Primary Birthing Unit (10238) has returned to Design phase from Delivery to address value management design changes.
- The two nationwide projects continue to go unrated until they begin assurance reporting: Interim Inpatient Bed Capacity (10269) and Nationwide Remediation Programme (10280)

Key Achievements

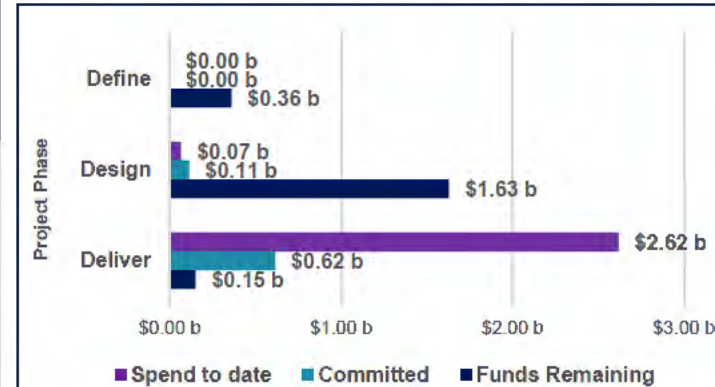
- Facilities Infrastructure Remediation Programme (FIRP) T2 (10056) – Completion of patients' carpark and return to Te Pūiri o Te Ora. Preparation for transition to new Central Plant building commenced.
- Te Rau Kawakawa Buller Integrated Family Health Centre (IFHC) (10112) - asbestos removal and demolition is complete on 6 of the 7 buildings to be removed.
- Dunedin Sterile Services Unit (10261) - the RFP documentation was reviewed and approved and issued to all five respondents approved by the procurement panel. Decant works to clear the first floor are underway.
- Radiation Oncology Project (102116) - The project team is maintaining a sound financial position under budget, progressing through a critical delivery phase, and actively managing risks to stay on track for successful delivery.



Project Lifecycle

This graph shows the total number of in-flight projects by project phase under each region.

NB: Projects that have reached 'Practical Completion', i.e., when the building and fit out is complete, are no longer considered active even though they might not have gone live yet.



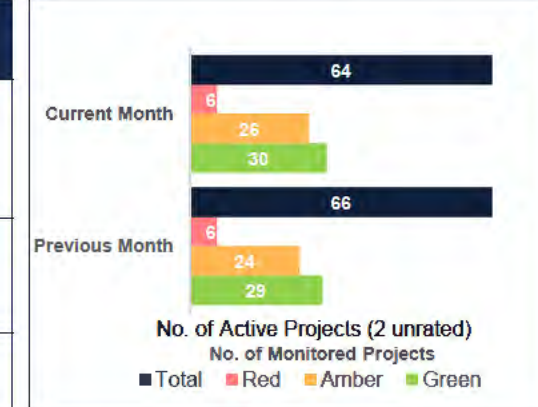
Project Financials

This graph shows the financial details of the total active projects by project phase.

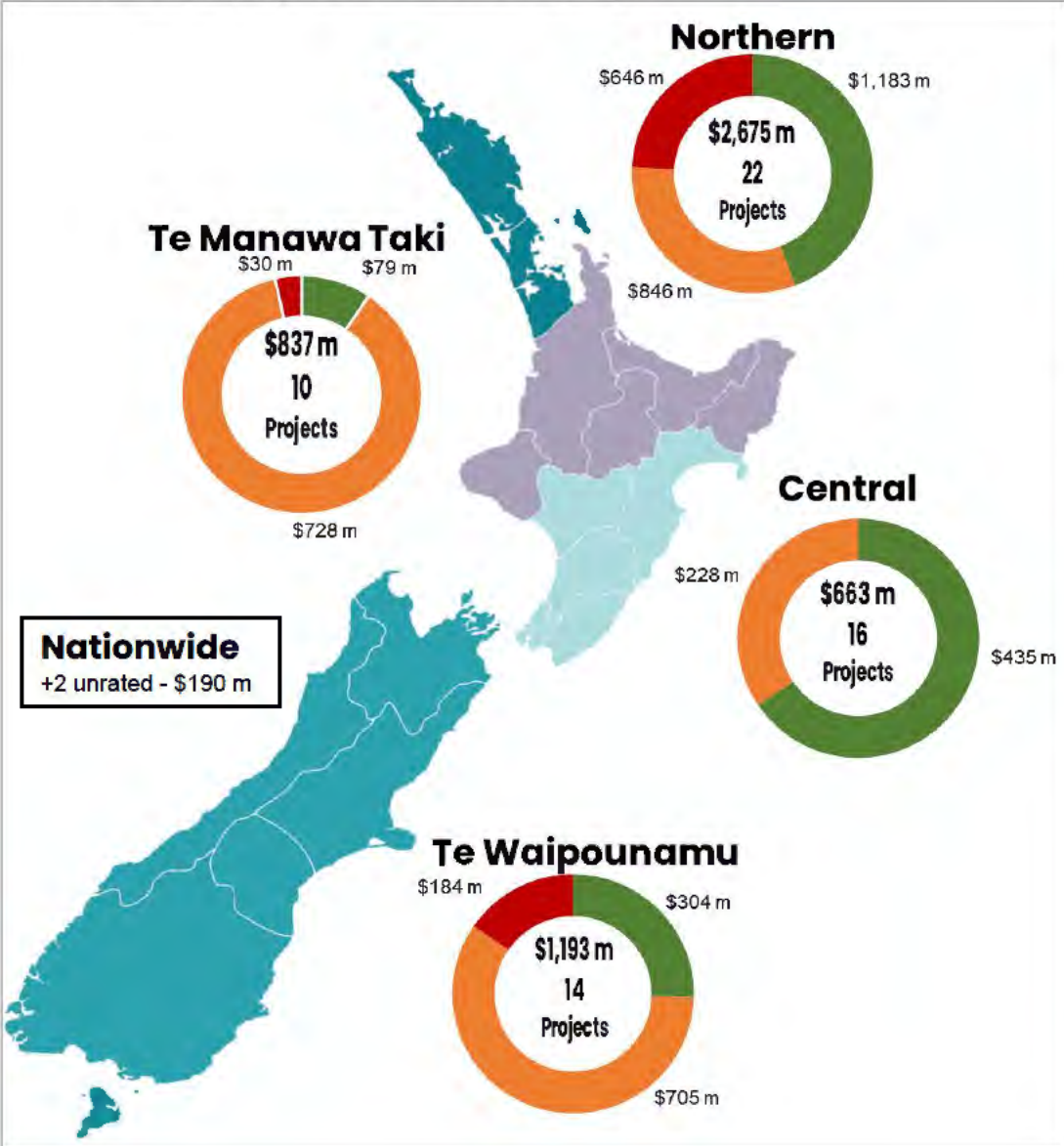
NB: These are in-flight projects that are over \$10 million or funded from the Health Capital Envelope (HCE).

Project Health Status

Overall Programme Status Rating (RAG) Definition	
Red (R)	Ministers should be aware of one or more significant risks and issues that require decisions from the Committee, Board and potentially Ministers.
Amber (A)	Some risks and issues could impact the overall project. These are being actively managed by the IIG.
Green (G)	No significant risks and issues are impacting the overall project.



Value of in-flight projects and RAG status by region



Project Health Status Highlights

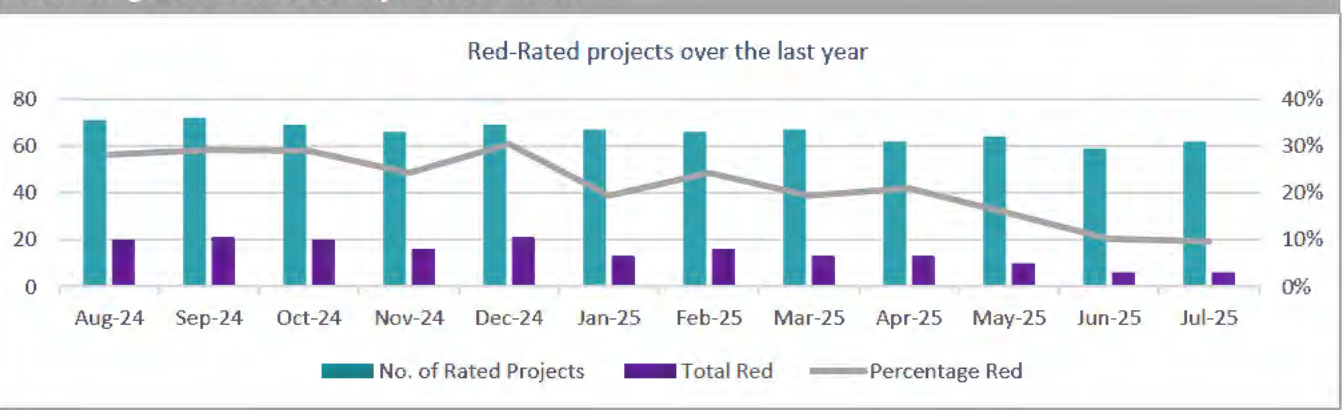
This section focuses on the overall health status of the projects and any movements compared to the previous month. Details are shown in the following slide.

Two projects have changed RAG rating, both from Green to Amber due to scheduling issues. One new project was moved from Design to Define after the first assurance report was submitted (Auckland Anatomical Pathology Service, 10273) and one project was moved from Deliver to Design to address value management design changes (Waitākere Primary Birthing Unit, 10238). The two New Dunedin Hospital projects were removed from the phase change table.

Project Phase	Define	Design	Deliver	Total
Number of Projects	7	17	40	64
\$ value	\$362 m	\$1,810 m	\$3,386 m	\$5,558 m
Net Movement	+1	-	-3	-2

Overall Rating	Green	Amber	Red	Unrated	Total
Number of Projects	30	26	6	2	64
\$ value	\$2,000 m	\$2,508 m	\$860 m	\$190 m	\$5,558 m
Net Movement	+1	+2	-	-5	-2

Percentage of Red-Rated Projects Over Time



Projects that changed overall RAG status from the previous month

ID	Project Name	Previous Month	Current Month	Commentary
Green to Amber				
10240	Renewal of Vertical Transport (Lifts), Wellington - Tranche 2	Green	Amber	
10027	Urgent Interim Works, Dunedin - Deferred Main, Gastroenterology, Audiology, ICU	Green	Amber	

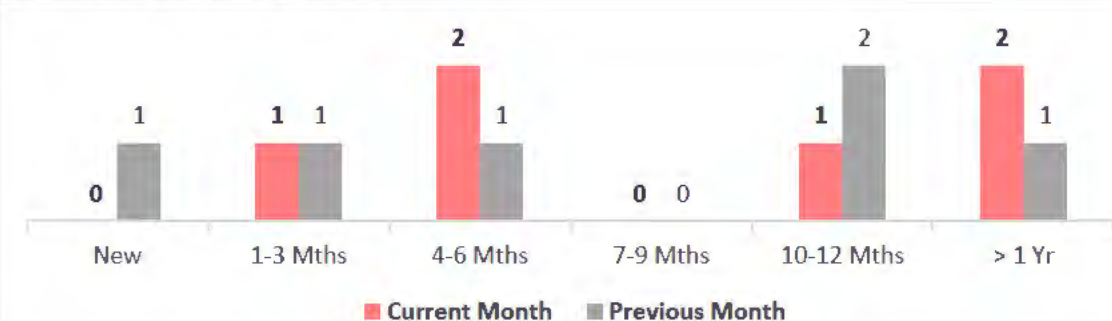
**Red Rated Projects**

The number of projects that remained in overall Red RAG status consecutively for over six months has remained static at three.

One of the projects removed from this category last month is the New Dunedin Hospital Inpatient Building which is no longer reporting through the Health Capital Update. Christchurch Tower 3 has been rated Red for exactly six months and will therefore be added to the list below next month.

One long-term Red-rated project, the Gisborne Child and Youth Health Community Hub, has suspended assurance reporting for the time being and will therefore remain Red for the interim.

**Red Rated Projects by Period**



**Projects rated Red for more than six months**

ID	Project Name	Phase	Sched.	Scope	Budget	Current Action
<b>Over \$10 million</b>						
10225	New Specialised Rehabilitation Centre (SRC), Manukau Health Park	Design	Red	Amber	Red	
30032	New Child and Youth Health Community Hub, Gisborne	Design	Red	Red	Red	

Projects rated Red for more than six months contd.

ID	Project Name	Phase	Sched.	Scope	Budget	Current Action
Over \$10 million						
10209	Grow Manukau at Manukau Health Park	Deliver	Red	Green	Red	

**10225 New Specialised Rehabilitation Centre (SRC)**

Relocation of the Auckland Regional Spinal Unit from Counties Manukau's Ōtara campus at Middlemore Hospital to a new purpose-built facility.

Overall	Schedule	Budget	Scope	Risk	Issues
Red	Red	Red	Amber	Amber	Amber

Consecutive overall RED ratings: 19

**Reason for overall project health status reported RED**

**Go-to- GREEN plan for the project**

**30032 New Child and Youth Health Community Hub, Gisborne ON HOLD**

Centralised location for a one-stop shop providing services for children and youth in Gisborne

Overall	Schedule	Budget	Scope	Risk	Issues
Red	Red	Red	Red	Red	Red

Consecutive overall RED ratings: 13

**Reason for overall project health status reported RED**

**Go-to- GREEN plan for the project**

**10209 Grow Manukau at Manukau Health Park**

Critical expansion of capacity at Manukau Health Park with supporting infrastructure, including outpatients, theatres, renal, radiology, integrated breast care and more.

Overall	Schedule	Budget	Scope	Risk	Issues
Red	Red	Red	Green	Amber	Amber

Consecutive overall RED ratings: 12

**Reason for overall project health status reported RED**

[Redacted content]

**Go-to- GREEN plan for the project**

[Redacted content]

This section provides tabular representations of the previous six months' total actual spend, including average spend, alongside forecast spend over the proceeding six months.

**Actual vs. Forecast Spend**

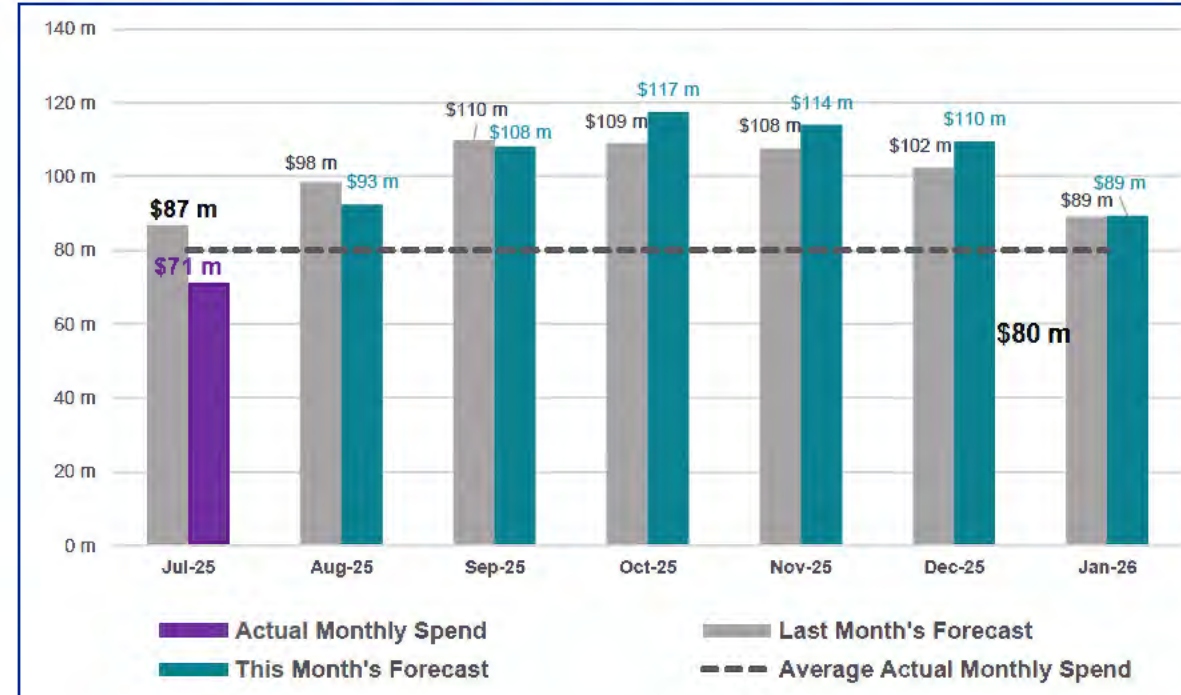
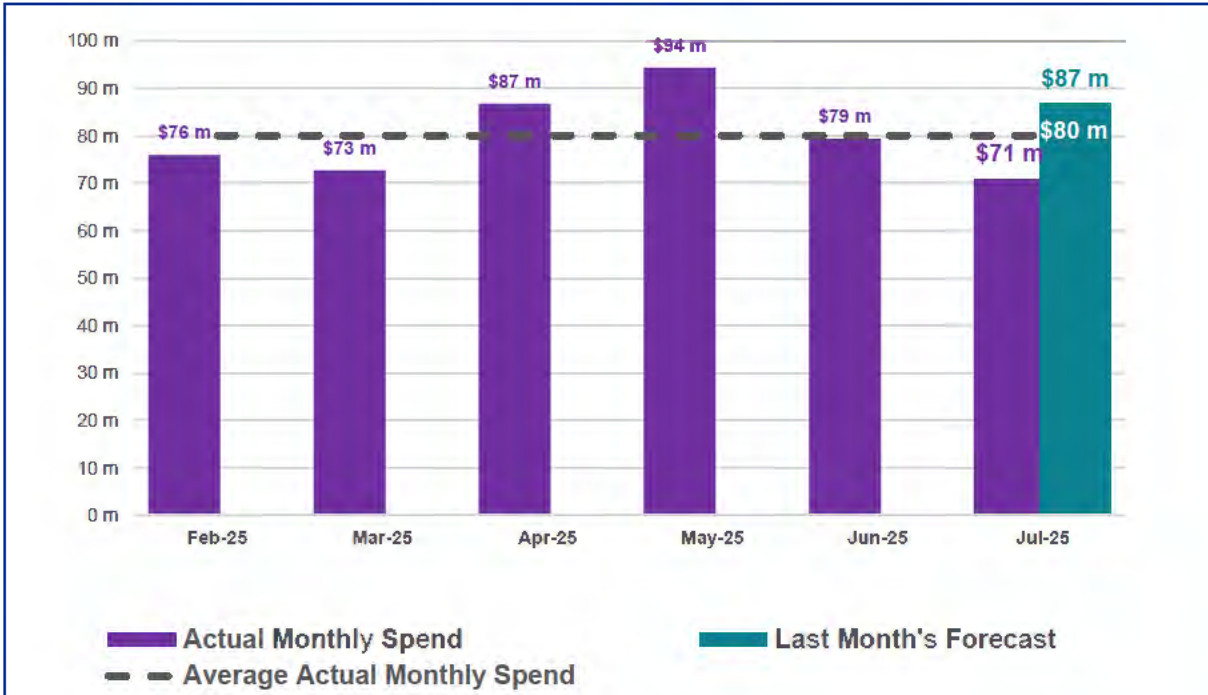
The actual spend for July 2025 is \$71 million. As with the previous month, this figure does not include the latest actual spend for New Dunedin Hospital due to the exclusion of its assurance reporting. The rolling monthly average for the past six months of \$80 million is \$1 million less than last month, which is to be expected from the removal of New Dunedin Hospital.

The net variance between actual spend and forecast spend for July of \$16 million is \$4 million less than last month, which equates to 18% (19% last month). The number of projects reporting variances over \$1 million remains relatively small at four only (one less than June). See slide 12.

**Forecast Spend**

The monthly forecast from July 2025 for the next six months has been amended from the June 2025 forecasts, which like last month exclude the New Dunedin Hospital projects. A comparison with earlier months' reports is hence not practical. Following this recalibration, forecasts are more stable and less liable to the fluctuations seen recently. Forecasts are down slightly over the next two months before increasing over the following three months and then leveling off in January. The August forecast is down by 5%, September by 2%, and then October is up by 7%, November by 6%, and December by 8%.

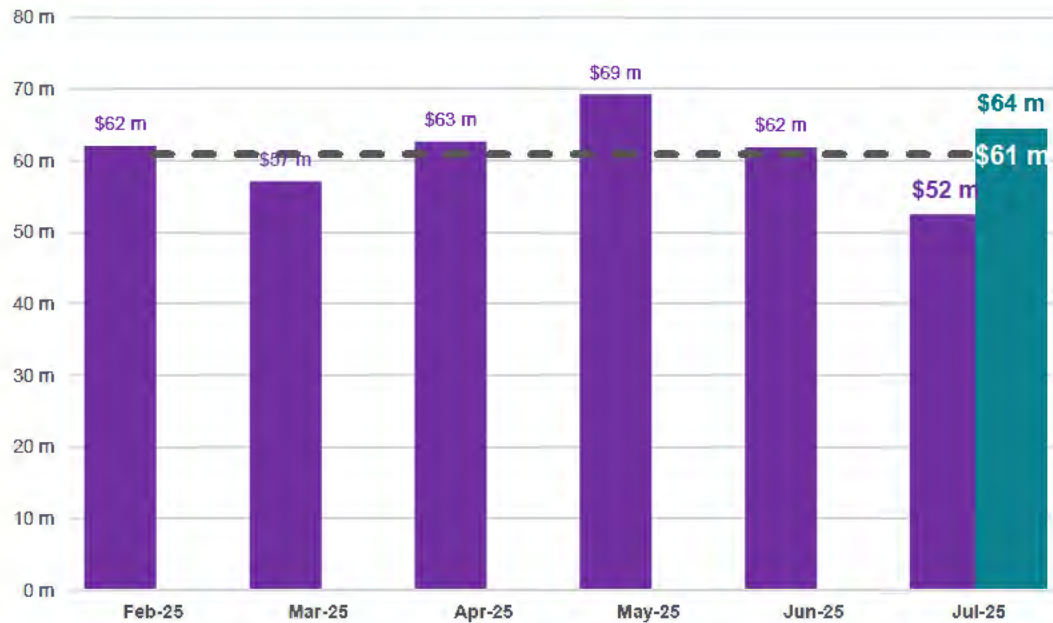
This month's forecasts for the next six months are all above the rolling monthly average actual spend of \$80 million, ranging from a 46% increase in October to 11% in January when traditionally construction work slows down over the summer break.



To provide greater visibility of the financial performance of the inflight portfolio, we have removed all 6 Red-rated projects, from the actual vs forecast spend. The New Dunedin Hospital projects are also excluded. Projects removed from the analysis include Grow Manukau at Manukau Health Park, Tower 3 (Christchurch) and the New Specialised Rehabilitation Centre at Manukau Health Park – all of which have substantial budgets and are continuing to face challenges. In this scenario the average rolling monthly actual spend is \$61 million, which is \$9 million more than this month's total actual spend \$54 million. The variance between the actual spend and the forecast for this month is \$12 million or 19% across 54 monitored projects (also excluding two new nationwide projects that have not started assurance reporting yet), which is the same as 19% across the full portfolio of 62 monitored projects (again, excluding new projects that are not yet providing assurance reporting). Two of the four projects with variances of over \$1 million on slide 12 are NOT excluded in this exercise.

Summary of 10 projects excluded: six Red-rated projects, two New Dunedin Hospital projects, two nationwide projects which have not started reporting yet).

Actual vs. Forecast Spend (excluding Red-rated projects)



■ Actual Monthly Spend      ■ Last Month's Forecast  
 Average Actual Monthly Spend

Forecast Spend (excluding Red-rated projects)



■ Actual Monthly Spend      ■ Last Month's Forecast  
■ This Month's Forecast       Average Actual Monthly Spend

## Cashflow Variance

The cashflow variance for July 2025 after calculating both underspend and overspend was \$15.5 million, which is less than last month's variance of \$19.2 million. Variances this month do not include any potential disparity from the New Dunedin Hospital projects after they were removed from assurance reporting data last month.

There are four projects with an underspend of more than \$1 million totaling \$7.88 million, which is an improvement on last month's six projects with a combined underspend of \$10.75 million.

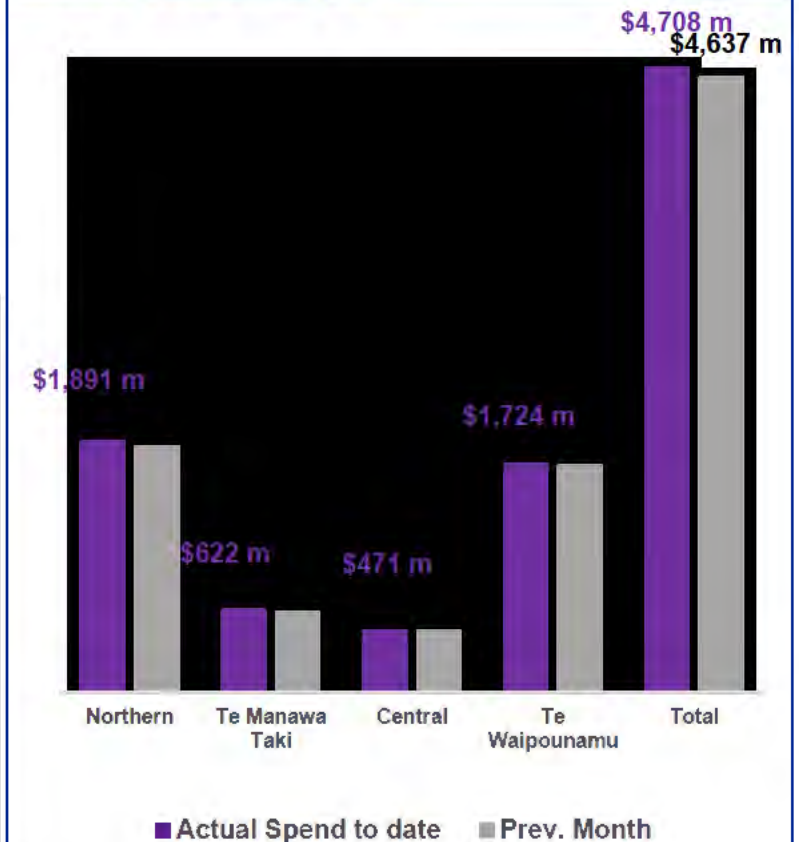
## Section 4: Financial Summary contd.

### Portfolio Financial by Region

	Northern	Te Manawa Taki	Central	Te Waipounamu	Total
<b>Actual Spend to date*</b>	\$1,891 m	\$622 m	\$471 m	\$1,724 m	\$4,708 m
<b>Prev. Month*</b>	\$1,853 m	\$607 m	\$466 m	\$1,711 m	\$4,637 m
<b>Actual Spend this month</b>	\$38 m	\$16 m	\$5 m	\$12 m	\$71 m

\* Figures are rounded

### Actual Spend to date by Region





**Project change requests with near-term submission dates for Ministerial approval**

District	Project Name	Change Sought	Funding Sought	Estimated Date to Ministers

## Projects with business cases with near-term submission and Budget 2026 dates for Ministerial approval

District	Project Name	Business Case Type	Appropriated Crown Funding	Expected Total Budget Request	Indicative Date for HNZ Approval	Estimated Date to Ministers
----------	--------------	--------------------	----------------------------	-------------------------------	----------------------------------	-----------------------------

† This is the expected date to Cabinet

± Health Targets Fund

Abbreviations: SSBC Single Stage Business Case, ATD Approval to Deliver, DBC Detailed Business Case, PBC Programme Business Case

In-flight projects that contribute towards the Health Targets

Portfolio contribution to the five health targets

The total number of projects mapped against the health targets has decreased by two from 38 to 36 following the exclusion of the two New Dunedin Hospital projects.

Health Targets were only established in the last three years and therefore some of the legacy projects were not aligned to these targets when they started.

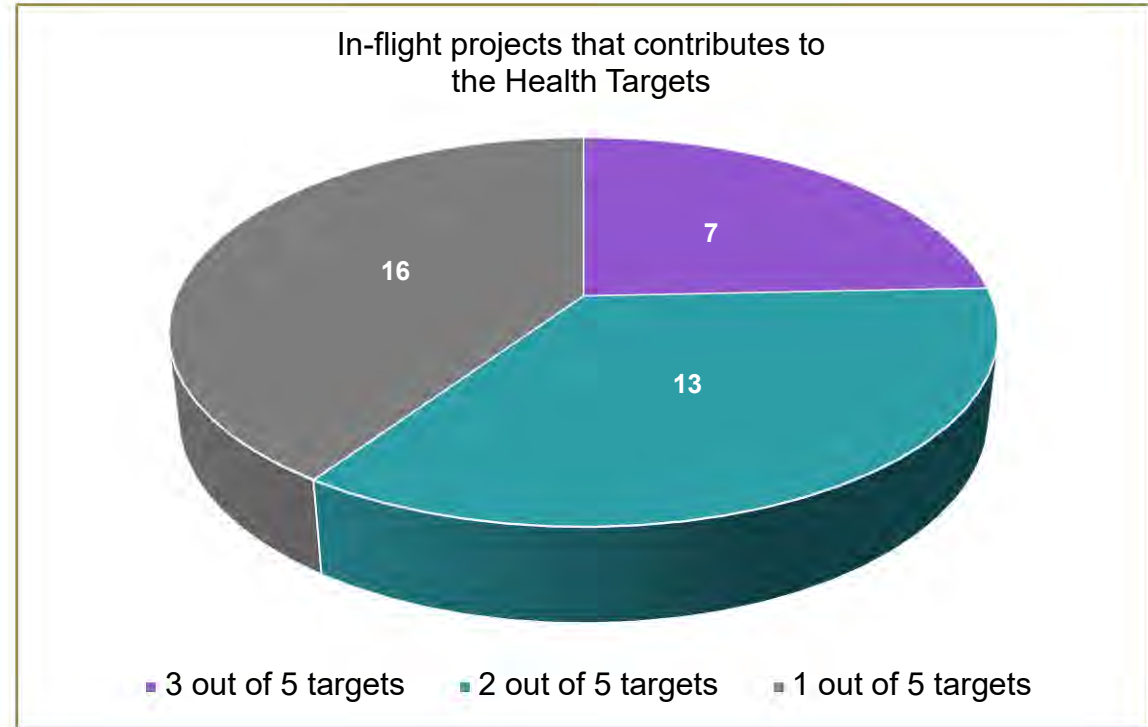
Of the 36 projects contributing to the health targets:

- 19% contribute towards three out of the five targets
- 36% towards two out of the five targets and
- 44% towards at least one target.

28 projects could not be mapped against these targets due to the nature of these projects i.e. remediation, refurbishment, seismic work.

As an enabling function, the IIG will continue to have projects of this nature that do not directly contribute to the Health Targets.

The list of the 36 in-flight projects that contribute to the Health targets is shown on the next page.



## In-flight projects that contribute towards the Health Targets

HNZ ID	Project Name	Health Targets					Contribution to Targets	Region
		1	2	3	4	5		
10230	Project Pihi Kaha - Whangārei Hospital Redevelopment		✓	✓	✓		3/5	Northern
10045	Acute Radiology Unit Relocation, Middlemore Hospital	✓		✓	✓		3/5	Northern
10079	Taranaki Base Hospital Redevelopment - Project Maunga - Stage 2		✓	✓	✓		3/5	Te Manawa Taki
10239	Tauranga Hospital Redevelopment, Tranche 1		✓	✓	✓		3/5	Te Manawa Taki
10256	Wellington Regional Hospital ED Refurbishment (Front of Whare)		✓	✓	✓		3/5	Central
10260	Interventional Radiology Unit Upgrade - Phase 3, Wellington Regional Hospital	✓		✓	✓		3/5	Central
10243	Project Whakatapuranga (Nelson Hospital Redevelopment)		✓	✓	✓		3/5	Te Waipounamu
10050	E Tū Wairua Hinengaro - Forensic Psychiatric Services Facilities Replacement, Mason Clinic, Auckland			✓	✓		2/5	Northern
10209	Grow Manukau at Manukau Health Park			✓	✓		2/5	Northern
10225	New Specialised Rehabilitation Centre (SRC)			✓	✓		2/5	Northern
30002	Starship Paediatric Intensive Care Unit (PICU) Bed Expansion and Atrium Redevelopment			✓	✓		2/5	Northern
102116	Radiation Oncology Project	✓			✓		2/5	Northern
10073	Adult Mental Health Facility - Tranche 1			✓	✓		2/5	Te Manawa Taki
10075	Mauri Ora - Mental Health and Addictions Inpatient Facility Replacement			✓	✓		2/5	Te Manawa Taki
30003	Te Whare Maiangiangi Remediation and Expansion - Tauranga			✓	✓		2/5	Te Manawa Taki
10263	High Dependency Unit, Wellington Regional Hospital		✓	✓			2/5	Central
30013	Procedure Rooms Upgrade, Hawke's Bay Hospital			✓	✓		2/5	Central
10007	Christchurch Hospital Redevelopment, Tower 3			✓	✓		2/5	Te Waipounamu
10027	Urgent Interim Works - Deferred Main, Gastroenterology, Audiology, ICU			✓	✓		2/5	Te Waipounamu
10246	Christchurch Hospital Endoscopy Expansion			✓	✓		2/5	Te Waipounamu
102117	Linear Accelerators	✓					1/5	Te Manawa Taki
10204	Manaaki Hōhono - Construction of Inpatient ward and ICU, Waitākere Hospital			✓			1/5	Northern
10270	Interventional Radiology Stage 1, Auckland City Hospital	✓					1/5	Northern
10271	Linear Accelerators Replacement, Auckland City Hospital	✓					1/5	Northern
10238	Construction of Waitākere Primary Birthing Unit			✓			1/5	Northern
10273	Auckland Community Anatomical Pathology Service Facility (APS)	✓					1/5	Northern
10208	Radiology Facilities Redevelopment, Hawke's Bay Hospital	✓					1/5	Central
10218	Surgical Services Expansion Project (SSEP), Hawke's Bay Hospital			✓			1/5	Central
30016	Maternity Ward and Neonatal Unit Upgrade			✓			1/5	Central
102118	Linear Accelerator & Bunker Installation, Hawke's Bay Hospital	✓					1/5	Central
300151	Acute Mental Health Unit Tranche 2 - Main Works				✓		1/5	Central
10112	Te Rau Kawakawa Buller Integrated Family Health Centre (IFHC)			✓			1/5	Te Waipounamu
30020	Nelson Hospital ED Reconfiguration		✓				1/5	Te Waipounamu
30030	Rural Primary Birthing Units in Central Otago			✓			1/5	Te Waipounamu
10265	Radiology CT Remediation, Palmerston North Hospital	✓					1/5	Central
10269	Interim Inpatient Bed Capacity			✓			1/5	Nationwide

## Section 5: Strategic Alignment contd.

### Health Targets

#### 1) Faster cancer treatment

90 per cent of patients to receive cancer management within 31 days of the decision to treat.

#### 2) Shorter stays in emergency departments

95 per cent of patients to be admitted, discharged or transferred from an ED within six hours.

#### 3) Shorter wait times for treatment

95 per cent of patients to wait less than four months for elective treatment.

#### 4) Shorter wait times for first specialist assessment (FSA)

95 per cent of patients to wait less than four months for an FSA

#### 5) Improved immunisation for children

95 per cent of children to be fully immunised at 24 months of age.

## Linear Accelerator Programme – contribute towards Health Target 1

## 1) Faster cancer treatment

90 per cent of patients to receive cancer management within 31 days of the decision to treat.

Health NZ is enabling the Health Target 'Faster Cancer Treatment' by delivering the approved LINAC projects and developing business cases for additional LINAC capacity.

The Linear Accelerator programme is managed individually in each region and not as a programme.

The budget RAG rating for the Linear Accelerator & Bunker Installation, Hawke's Bay Hospital project has moved from Green to Amber as the schedule is at risk primarily due to inadequate project resources and the Quantity Surveyor has estimated an increase to the project forecast cost as a result. [REDACTED], however, the programme has yet to be confirmed as the main contract has not yet been awarded.

## Progress on in-flight project under Linear Accelerator Programme

Area	Project Name	Project Stage	No. of LINAC Machines	Total Project Cost	Forecast Go-Live	RAG Status		
						Time	Scope	Budget
Te Tai Tokerau Northland	Radiation Oncology Project (102116)	Delivery	1	[REDACTED]	Jul-26	Green	Green	Green
Taranaki	Linear Accelerators (102117)	Delivery	1		Nov-25	Green	Green	Green
Te Matau a Māui Hawke's Bay	Linear Accelerator & Bunker Installation, Hawke's Bay Hospital (102118)	Preliminary Design	1		[REDACTED]	Amber	Green	Amber

Below is an update on the Budget 2025 initiatives and the dates we are working towards. We are working with Crown Infrastructure Delivery on surge resourcing options to ensure we are able to deliver these projects as a matter of priority.

## Section 6: Budget 2025 Projects

ID	Project Name	Description	Current Status	Forecast Construction Start	Forecast Construction End	Spend to Date	Total Budget	RAG



# Project Whakatupuranga (Nelson Hospital Redevelopment)

Phase: Design

## Section 8: Major Programmes

### Section 8.1: Regional Hospital Redevelopment Programme

Design and construction of a new Inpatient building, Energy Centre and refurbishment of existing clinical buildings across the campus to address seismic issues and critical services infrastructure.

Overall	Schedule	Budget	Scope	Risk	Issues
Amber	Amber	Amber	Green	Red	Green

#### Overall Project Status

The Detailed Business Case (DBC) for Stage / Project 2 was approved and announced following Budget 2025. Conditions issued in the Cabinet paper have been reviewed and IIG will confirm the timing of the required reports and subsequent business cases. Baselines are being reset to reflect this. Works on the George Manson Building to address the Earthquake Prone Building (EPB) notices are on hold due to access constraints in the clinical wards. The digital team is continuing with their current state analysis, and the clinical leads are developing Model of Care plans, as well as assisting with campus decanting and facilitating construction. Design is in the early Concept Design phase, and a major contractor procurement contract award is anticipated by early September. Design completion, as well as Delivery start, (both noted as "TBC") will be confirmed in collaboration following the major contractor award. The masterplan is being updated to add the interim ward and potential LINAC locations. Demolition is progressing well, as is decanting of services required in Stage / Project 1.

#### Scope

Phase 1 - Design and enabling works to facilitate a campus redevelopment programme.

Budget	
Total Budget	\$73 m
Actual Spend	\$6.42 m
Forecast Spend August-25	\$2.44 m

Milestone	Forecast	Baseline
Design End ( Project 2)		
Procurement Contract Award		
Delivery Start		
Delivery End		
Go-live		

#### Financial Summary

--

#### Commercial / Contractor Performance

--

# Tauranga Hospital Redevelopment

Phase: Define

Redevelopment of Tauranga Hospital.

Overall	Schedule	Budget	Scope	Risk	Issues
Green					

## Overall Project Status

The Health Infrastructure Plan (HIP) confirmed the Tauranga Hospital redevelopment as a major upcoming investment. The Programme Business Case (PBC) is due to be completed by the end of October 2025. All functional briefs have been prepared and work is continuing on design feasibility, due for completion in late August 2025.

## Scope

An Approval to Initiate was issued by the Health NZ Board in September 2023. The scope of the current phase is to prepare a PBC that investigates, evaluates and proposes the investment pathway for the redevelopment of the Tauranga Hospital Campus out to the completion of the clinical service plan in 2043.

Milestone	Forecast	Baseline
Site master planning		
Programme business case		
Enabling works start		
Design start		

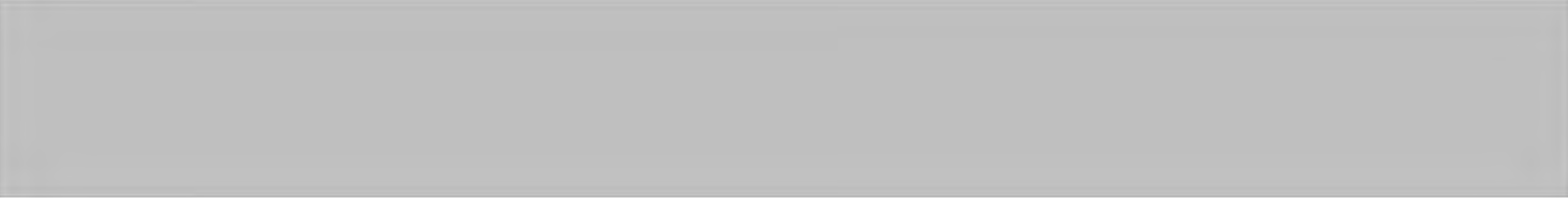
## Financial Summary

[Redacted content]

## Commercial / Contractor Performance

[Redacted content]

[Large redacted area]



# Te Mataua a Maui

## Hawke's Bay Fallen Soldiers' Memorial Hospital Redevelopment

Phase: Identify

Redevelopment of Hawke's Bay Fallen Soldiers' Memorial Hospital.

Overall	Schedule	Budget	Scope	Risk	Issues
Amber				Amber	Amber

Milestone	Forecast	Baseline
Design End		
Procurement Contract Award		
Delivery Start		
Delivery End		
Go-live		

### Overall Project Status

Writing of the business case has commenced, and a Treasury Gateway review is scheduled. The Project Steering Group (PSG) met this month to endorse the cultural narrative that has been completed to support the Business Case. Work continues to ensure that the newly developed Schedule of Accommodation is benchmarked against the existing Destravis Masterplan and across comparative sites to ensure consistency and alignment. An Executive User Group (EUG) has been formally established to provide ongoing oversight. Work is progressing well for the key tactical projects onsite. Lead contractor Hawkins Ltd. is well underway onsite with the refurbishment and expansion of the radiology facility. Preliminary design for the Temporary Inpatient Unit (IPU) is complete. Procurement for external Project Management (TSA Reilly) and Quantity Surveying (WT Partnership) consultants is complete. In August, the procurement of the D&C contractors for Temporary IPU as part of the national rapid capacity programme is well underway and will be complete in September. Preliminary design of the Radiation Oncology (LINAC) project is complete. A purchase order has been issued for the purchase of the LINAC machine.

### Financial Summary

--

### Scope

The current phase of works is focused on the development of a Programme Business Case (PBC) with associated artifacts.

### Commercial / Contractor Performance

--

# Palmerston North Hospital Redevelopment

Phase: Identify

Project Ka Ora Kainga Rua - redevelopment of Palmerston North Hospital.

Milestone	Forecast	Baseline
PBC		
Procurement Contract Award		
Delivery Start		
Delivery End		
Go-live		

Overall	Schedule	Budget	Scope	Risk	Issues
<b>Amber</b>				<b>Amber</b>	<b>Amber</b>

**Overall Project Status**

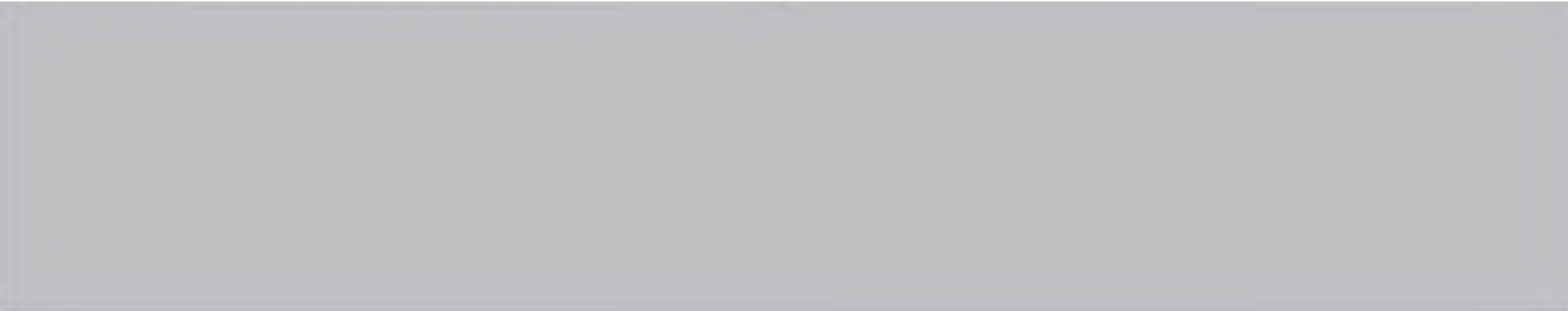
The Health Infrastructure Plan (HIP) confirmed the Palmerston North Hospital redevelopment as a major upcoming investment. The Programme Business Case (PBC) is due to be completed by the end of October 2025. All functional briefs have been prepared and work is continuing on design feasibility, due for completion in mid September 2025.

**Financial Summary**

**Scope**

The scope of the current phase of work is preparation of the Programme Business Case (PBC). The basis of the PBC feasibility design being test for fit design for PBC options, based on bulk and location drawings, Schedule of Accommodations and Functional Briefs, as well as various technical assessments such as infrastructure and condition assessment, traffic surveys, geotechnical testing and topographical survey.

**Commercial / Contractor Performance**



# Project Pihi Kaha - Whangārei Hospital Redevelopment

Phase: Design

Section 8.1: Regional Hospital Redevelopment Programme

Replacement of a large section of the main hospital block to address building issues and increase capacity.

Overall	Schedule	Budget	Scope	Risk	Issues
Amber	Amber	Amber	Amber	Green	Green

## Overall Project Status

The Pihi Kaha programme has advanced strongly, with the concept design completed and the team now moving into the preliminary design phase supported by active clinical engagement. The Tira Ora Child Health Centre has overcome piling challenges, reducing delays and costs, and secured structural steel supply, signalling renewed site momentum. Car park funding has been confirmed, with tenders set for release in August to meet the November mobilisation target. Governance milestones were achieved with the Gateway Review and Funding Board endorsement of the ward tower business case and ASB change request, both progressing toward Ministerial and Board approvals. Construction partner procurement for Pihi Kaha has closed, with evaluation nearing complete and contractor panel planning underway to de-risk and streamline delivery. Overall, the project is tracking positively, with key milestones achieved and the focus now on resourcing, team strengthening, and preparation for the critical design and procurement phases ahead

## Scope

The project will replace a large section of the main hospital block. It includes Project Pukauakaua – Acute Services Building for theatres, ED, ICU, a coronary care unit, a cardiac catheter laboratory, radiology and support services, as well as design (but not construction) of a ward tower adjacent to the acute services building. This would accommodate four medical-surgical wards and an acute assessment unit to allow for decommissioning the end-of-life surgical wing. Ward Tower construction, necessary to deliver on objectives, is not currently part of the approved scope. It includes rebuilds for the acute services building: 'Project Tira Ora – Child Health Centre' and 'Project Te Whaea o te Iwi – Whanau House'.

Budget		Milestone	Forecast	Baseline
Total Budget	\$759 m	Design End		
Actual Spend	\$19.82m	Procurement Contract Award		
Forecast Spend August-25	\$1.87m	Delivery Start		
		Delivery End		
		Go-live		

## Financial Summary

## Commercial / Contractor Performance

Monitored projects with upcoming construction starts or practical completions within the next six months (Indicative dates only)

Project ID	Project Name	Delivery Start Date	Practical Completion	Go-Live	Sep 2025	Oct 2025	Nov 2025	Dec 2025	Jan 2026	Feb 2026
10210	Kidz First and McIndoe Building Recladding, Middlemore Hospital	17/10/2025				◆				
10261	Dunedin Hospital Sterile Services Unit (SSU)	21/10/2025				◆				
10266	Temporary In-patient Unit, Hawke's Bay Hospital	28/10/2025				◆				
10271	Linear Accelerators Replacement, Auckland City Hospital	24/11/2025					◆			
10272	Facilities Infrastructure Remediation Programme Tranche Three	19/12/2025						◆		
10226	Nga Puna Waiora High Voltage Infrastructure Upgrades, Wellington Regional Hospital	1/01/2026							◆	
10238	Construction of Waitākere Primary Birthing Unit	9/01/2026							◆	
30030	Rural Primary Birthing Units in Central Otago	20/01/2026							◆	
30016	Maternity Ward and Neonatal Unit Upgrade	1/02/2026								◆
10245	Palmerston North Hospital Asset Remediation Programme	1/02/2026								◆
30024	Wairau Boilers		3/09/2025	30/09/2025	◆					
102117	Linear Accelerators		16/10/2025	21/11/2025		◆				
30013	Procedure Rooms Upgrade, Hawke's Bay Hospital		31/10/2025				◆			
10050	E Tū Wairua Hinengaro - Forensic Psychiatric Services Facilities Replacement, Mason Clinic, Auckland		10/11/2025	8/12/2025			◆			
10075	Mauri Ora - Mental Health and Addictions Inpatient Facility Replacement		28/11/2025	1/02/2026				◆		◆
10241	Waitākere – Electrical Infrastructure Upgrade		13/12/2025	13/12/2025				◆		
10079	Taranaki Base Hospital Redevelopment - Project Maunga - Stage 2		15/12/2025					◆		
10056	Facilities Infrastructure Remediation Programme - Tranche 2		22/12/2025	22/12/2025					◆	
10258	Generator and Electrical Upgrade and Electrical Supply to Site		30/12/2025	30/12/2025					◆	
10112	Te Rau Kawakawa Buller Integrated Family Health Centre (IFHC)		7/01/2026	7/01/2026						◆
30002	Starship Paediatric Intensive Care Unit (PICU) Bed Expansion and Atrium Redevelopment		21/01/2026	1/02/2026						◆
10020	Acute Adult Mental Health Facility, Palmerston North Hospital			31/10/2025		◆				
10227	Regional Network Remediation			30/11/2025			◆			

Small incremental schedule movements have been identified. A new way of tracking and reporting on schedule movements will be implemented in the coming months.

Construction Start

Practical Completion

Go-Live

One project has recently submitted its Post Implementation Report (PIR). Manaia House - Community Mental Health – Whangārei (30025) is funded from both the HCE and depreciation with a total cost of \$21.6 million. The project successfully achieved its core objective: consolidating Whangārei’s Mental Health and Addiction Services—previously delivered from four separate, outdated locations—into a single, purpose-built facility. This has improved service integration, increased clinical functionality, and enhanced the experience for both tāngata whai ora and staff.

Two projects have recently submitted Project Closure Reports (PCR) - Hawke’s Bay Hospital Main Electrical Supply Upgrade (30014) and Wairarapa Hospital Outpatients Refurbishment (30037). The Electrical Supply Upgrade project is a small HCE-funded project with a total value of \$4 million. The project was completed successfully—replacing six high-priority switchboards—despite external challenges. These included delays due to Covid-19 and Cyclone Gabrielle, which impacted the availability of materials and labour. In response, a formal change request was submitted and approved to re-baseline the project timeline, extending completion to 31 January 2025, without financial implications. The project team demonstrated strong engagement with key stakeholders, ensuring clinical priorities were respected during works. The new switchboards now provide greater reliability and capacity, reducing operational risks and supporting future service growth. Objectives and scope were fully achieved.

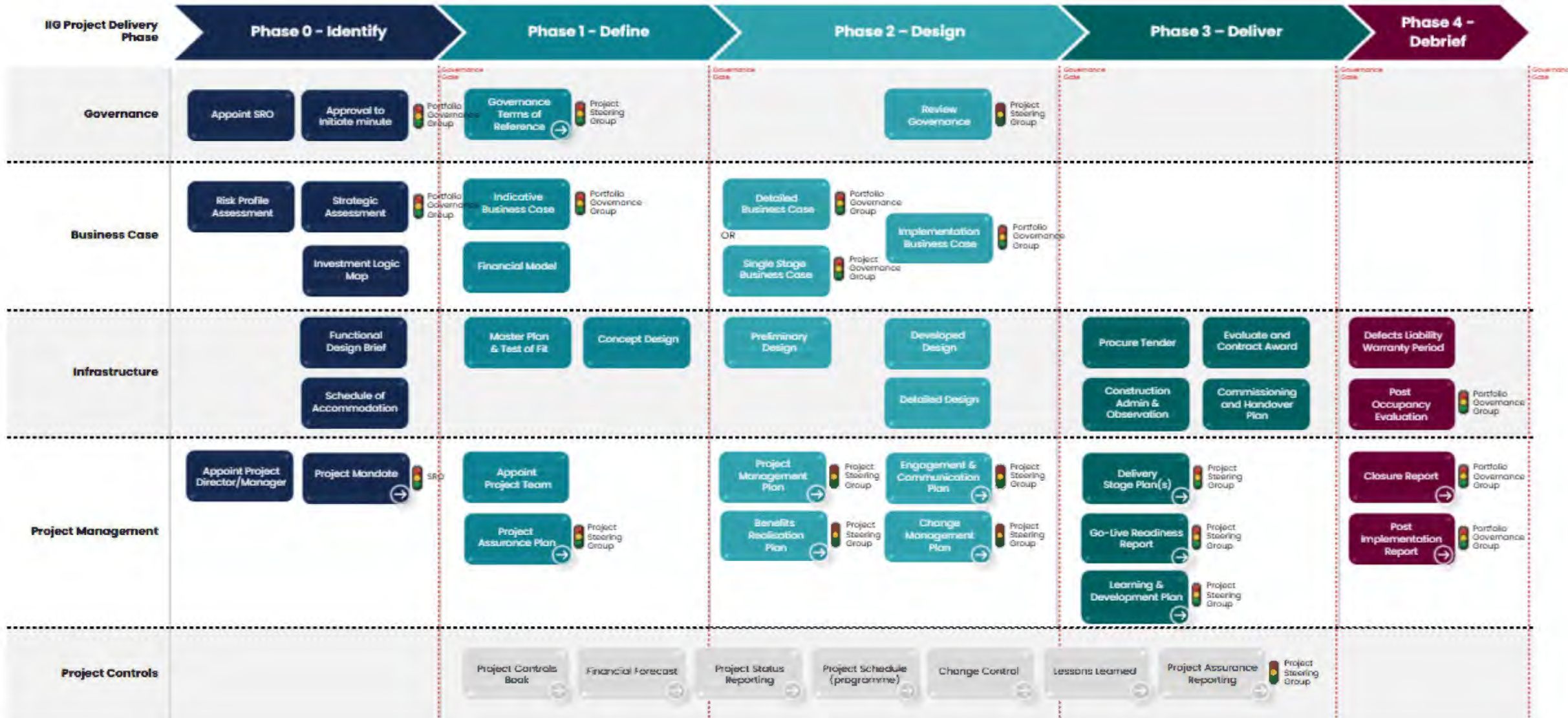
The Wairarapa Hospital Outpatients Refurbishment is a very small HCE-funded project with a total value of \$900,000. The refurbishment works undertaken through this project were intended to enhance the facility and its use by improving outpatient clinical treatment areas, provision of additional space to provide more care through commissioning unused space and providing appropriate office and administrative space for clinicians to prioritise use of treatment spaces for clinical care. A further original aim was to improve the size and general orientation of the Emergency Department waiting area. However, due to the COVID pandemic and the Health System response the focused work for the Emergency Department waiting room could not be achieved and so with additional isolation works needing to be undertaken in parallel this original element was removed from the scope of the project. Otherwise, the objectives and remaining scope of the project were fully achieved.

ID	Project Name	Benefits Realised (Benefits Achieved out of Total Benefits)	Benefits Description	Benefits Not Achieved OR Not Yet Quantified (NYQ)
30014	Hawke's Bay Hospital Main Electrical Supply Upgrade	5/5	<ul style="list-style-type: none"> <li>1. Ensure reliable and safe power distribution to all hospital services</li> <li>2. Replace aging infrastructure to reduce failure risk</li> <li>3. Improve asset lifecycle management and reduce reactive maintenance</li> <li>4. Support delivery of new hospital developments (e.g. Surgical Expansion, Radiology)</li> <li>5. Ensure compliance with seismic and electrical safety standards</li> </ul>	• N/A
30037	Wairarapa Hospital Outpatients Refurbishment	3/3	<ul style="list-style-type: none"> <li>1. Refurbishment of hydrotherapy area: creation of additional outpatient clinic space, new single office space, new shared office area, new kitchenette area</li> <li>2. Outpatients re-fit: Refurbishment of leased outpatient space, installation of Audiology Booth</li> <li>3. SMO shared office accommodation: create an area for SMO office space/ lounge, create an area for on-site accommodation for on call/ locum SMOs, Create an area for SMO/RMO office staff to work along side SMOs</li> </ul>	• N/A
30025	Manaia House - Community Mental Health - Whangārei	4/4	<ul style="list-style-type: none"> <li>Improved patient outcomes: Better service performance Health outcomes for Northlanders are as good, or better than the rest of New Zealanders</li> <li>Addressing equity and unmet need: Services are accessible and culturally appropriate. Improves equity for Māori and other deprived communities. Improved access to care and patient choice</li> <li>Better patient and staff experience: Better environment for patient, staff and visitors</li> <li>Sustainability, environment, condition: Resilient and sustainable assets</li> </ul>	• Qualitative data indicate all benefits are being achieved. Quantitative data will be available by 2030





# IIG Project Lifecycle Pathway



Health Capital Project Update											Reporting Period: Period ending 31 July 2025	
ID	REGION	LOCATION/CAMPUS	BUSINESS CASE NAME	DESCRIPTION	BUSINESS CASE STAGE	FORECAST BUSINESS CASE COMPLETION	TOTAL FUNDING ALLOCATED	PREVIOUS MONTH OVERALL RAG STATUS	CURRENT MONTH OVERALL RAG STATUS	REASON FOR CURRENT MONTH OVERALL RED RAG STATUS OR OTHER ISSUES		
10269	Nationwide	Nationwide	Interim Inpatient Bed Capacity	Development of three interim 28-32 bed units to increase capacity. Locations TBC.	Implementation Business Case	Various	\$90.0 m	New - no rating	New - no rating			
10280	Nationwide	Nationwide	Nationwide Remediation Programme	Funding to facilitate a nationwide remediation programme, including small scale infrastructure projects.	Programme Business Case	Various	\$100.0 m	New - no rating	New - no rating			
10272	Northern	Te Toka Tumai Auckland	Facilities Infrastructure Remediation Programme Tranche Three	Building Resilience - New central plant, tunnels and future integration at Auckland City Hospital and Greenlane	Implementation Business Case	Jul-26	\$72.89 m	New - no rating	Green			
10273	Northern	Te Toka Tumai Auckland	Auckland Community Anatomical Pathology Service Facility (APS)	Lease and fit-out of a fit-for-purpose lab to provide anatomic pathology services to the Auckland region.	Single Stage Business Case	TBC	\$28.8 m	New - no rating	Green			
10239	Te Manawa Taki	Hauora a Toi Bay of Plenty	Tauranga Hospital Redevelopment, Tranch 1	Redevelopment of Tauranga Hospital	Programme Business Case	Dec-25	\$0.0 m	Green	Green			
30004	Te Manawa Taki	Hauora a Toi Bay of Plenty	Te Toki Maurere AMHU Redevelopment - Whakatane	New build of a 10 bed mental health and addiction service facility.	Single Stage Business Case	Oct-25	\$15.0 m	Amber	Amber			
10245	Central	Te Pae Hauora o Ruahine o Taranua MidCentral	Palmerston North Hospital Asset Remediation Programme	Remediation of Palmerston North Hospital.	Single Stage Business Case	Nov-25	\$55.0 m	Green	Green			
							<b>\$361.7 m</b>					

DEFINE

ID	REGION	LOCATION/ CAMPUS	PROJECT NAME	FORECAST DESIGN COMPLETION	FORECAST CONSTRUCTION COMPLETION	TOTAL FUNDING APPROVED	OVERALL PROGRESS (%)	PREVIOUS MONTH OVERALL RAG STATUS	CURRENT MONTH OVERALL RAG STATUS	CURRENT MONTH SCHEDULE STATUS	CURRENT MONTH BUDGET STATUS	CURRE NT MONTH SCOPE STATUS	REASON FOR CURRENT MONTH OVERALL RED RAG STATUS OR OTHER ISSUES
10059	Northern	Counties Manukau	Core Infrastructure Upgrade	Feb-26	Sep-27	\$33.8 m	40%	Amber	Amber	Red	Green	Green	
10225	Northern	Counties Manukau	New Specialised Rehabilitation Centre (SRC)	Dec-25	Jan-29	\$136.0 m	30%	Red	Red	Red	Red	Amber	
10210	Northern	Counties Manukau	Kidz First and McIndoe Building Recladding, Middlemore Hospital	Aug-25	Dec-27	\$41.9 m	35%	Green	Green	Amber	Green	Green	
10230	Northern	Te Tai Tokerau Northland	Project Pihl Kaha - Whangārei Hospital Redevelopment	Oct-28	Aug-31	\$759.0 m	21%	Amber	Amber	Amber	Amber	Amber	
10238	Northern	Waitematā	Construction of Waitākere Primary Birthing Unit	Nov-25	May-27	\$15.0 m	30%	Green	Green	Green	Green	Green	
10270	Northern	Te Toka Tumai Auckland	Interventional Radiology Stage 1, Auckland City Hospital	Jun-26	Mar-27	\$41.2 m	6%	Amber	Amber	Amber	Green	Green	
10271	Northern	Te Toka Tumai Auckland	Linear Accelerators Replacement, Auckland City Hospital	Sep-25	Dec-26	\$17.3 m	15%	Green	Green	Amber	Green	Green	
10252	Te Manawa Taki	Hauora a Toi Bay of Plenty	Bay of Plenty Seismic Strengthening (Building 20 and Kitchen Refurbishment)	Mar-26	May-28	\$24.8 m	5%	Amber	Amber	Red	Amber	Amber	
30032	Te Manawa Taki	Tairāwhiti	Gisborne Hospital New Child and Youth Health Community Hub	TBC	TBC	\$5.0 m	50%	No report	No report	No report	No report	No report	
10226	Central	Capital, Coast & Hutt Valley	Nga Puna Waiora High Voltage Infrastructure Upgrades, Wellington Regional Hospital	Sep-25	Dec-27	\$25.0 m	38%	Amber	Amber	Amber	Amber	Amber	

DESIGN

ID	REGION	LOCATION/ CAMPUS	PROJECT NAME	FORECAST DESIGN COMPLETION	FORECAST CONSTRUCTION COMPLETION	TOTAL FUNDING APPROVED	OVERALL PROGRESS (%)	PREVIOUS MONTH OVERALL RAG STATUS	CURRENT MONTH OVERALL RAG STATUS	CURRENT MONTH SCHEDULE STATUS	CURRENT MONTH BUDGET STATUS	CURRE NT MONTH SCOPE STATUS	REASON FOR CURRENT MONTH OVERALL RED RAG STATUS OR OTHER ISSUES
30045	Central	Whanganui	Waimarino Health Centre Extension	TBC	TBC	\$3.3 m	10%	Amber	Amber	Amber	Amber	Amber	
102118	Central	Te Matau a Māui Hawke's Bay	Linear Accelerator & Bunker Installation, Hawke's Bay Hospital	Jun-26	Mar-28	\$37.1 m	0%	Amber	Amber	Amber	Amber	Green	
10265	Central	Te Pae Hauora o Ruahine o	Radiology CT Remediation, Palmerston North Hospital	TBC	TBC	\$15.9 m	0%	Amber	Amber	Green	Green	Red	
10243	Te Waipounamu	Nelson Marlborough	Project Whakatupuranga (Nelson Hospital Redevelopment)	Dec-25	Dec-30	\$619.0 m	21%	Amber	Amber	Amber	Amber	Green	
10235	Te Waipounamu	Southern	Ward 10 Refurbishment, Wakari Hospital, Dunedin	TBC	TBC	\$12.3 m	11%	New - no rating	Green	Amber	Green	Green	
10261	Te Waipounamu	Southern	Dunedin Hospital Sterile Services Unit (SSU)	TBC	Jul-26	\$14.0 m	3%	Green	Green	Green	Green	Green	

ID	REGION	LOCATION/ CAMPUS	PROJECT NAME	FORECAST CONSTRUCTION COMPLETION	TOTAL FUNDING APPROVED	OVERALL PROGRESS (%)	PREVIOUS	CURRENT	CURRENT	CURRENT	CURRENT	REASON FOR CURRENT MONTH OVERALL RED RAG STATUS OR OTHER ISSUES
							MONTH OVERALL RAG STATUS	MONTH OVERALL RAG STATUS	MONTH SCHEDULE STATUS	MONTH BUDGET STATUS	MONTH SCOPE STATUS	
10256	Central	Capital, Coast & Hutt Valley	Wellington Regional Hospital ED Refurbishment (Front of Whare)	May-30	\$243.6 m	6%	Green	Green	Green	Green	Green	
300151	Central	Capital, Coast & Hutt Valley	Acute Mental Health Unit Tranche 2 - Main Works	May-27	\$79.3 m	53%	Green	Green	Green	Green	Green	
10255	Central	Capital, Coast & Hutt Valley	Copper Pipes Tranche 2	Dec-26	\$51.8 m	79%	Amber	Amber	Amber	Red	Green	
10208	Central	Te Matau a Māui Hawke's Bay	Radiology Facilities Redevelopment, Hawke's Bay Hospital	Aug-27	\$35.8 m	38%	Green	Green	Green	Green	Green	
10257	Central	Te Pae Hauora o Ruahine o Taranaki MidCentral	Critical Infrastructure Interim Works, Palmerston North Hospital	Dec-26	\$29.5 m	63%	Amber	Amber	Amber	Green	Green	
10266	Central	Te Matau a Māui Hawke's Bay	Temporary In-patient Unit, Hawke's Bay Hospital	Oct-26	\$28.3 m	18%	Amber	Amber	Red	Green	Green	
10260	Central	Capital, Coast & Hutt Valley	Interventional Radiology Unit Upgrade - Phase 3, Wellington Regional Hospital	Dec-26	\$20.9 m	38%	Green	Green	Amber	Green	Green	
10218	Central	Te Matau a Māui Hawke's Bay	Surgical Services Expansion Project (SSEP), Hawke's Bay Hospital	Aug-25	\$18.8 m	95%	Amber	Amber	Amber	Green	Green	
10240	Central	Capital, Coast & Hutt Valley	Renewal of Vertical Transport (Lifts) - Tranche 2	Jul-25	\$5.8 m	95%	Green	Amber	Amber	Green	Green	
30013	Central	Te Matau a Māui Hawke's Bay	Procedure Rooms Upgrade, Hawke's Bay Hospital	Oct-25	\$3.0 m	45%	Amber	Amber	Amber	Amber	Green	
10056	Northern	Te Toka Tumai Auckland	Facilities Infrastructure Remediation Programme - Tranche 2	Dec-25	\$361.8 m	94%	Green	Green	Amber	Green	Green	
10209	Northern	Counties Manukau	Grow Manukau at Manukau Health Park	Dec-27	\$316.8 m	61%	Red	Red	Red	Red	Green	
10001	Northern	Te Toka Tumai Auckland	Facilities Infrastructure Remediation Programme - Tranche 1	Jul-26	\$309.1 m	89%	Green	Green	Green	Green	Green	
10050	Northern	Waitematā	E Tū Wairua Hinengaro - Forensic Psychiatric Services Facilities Replacement, Mason Clinic, Auckland	Nov-25	\$192.8 m	80%	Red	Red	Red	Red	Green	
10204	Northern	Waitematā	Manaaki Hōhono - Construction of Inpatient ward and ICU, Waitākere Hospital	Aug-26	\$96.4 m	64%	Green	Green	Green	Green	Green	
102116	Northern	Te Tai Tokerau Northland	Radiation Oncology Project	Mar-26	\$60.9 m	77%	Green	Green	Green	Green	Green	

DELIVER

ID	REGION	LOCATION/ CAMPUS	PROJECT NAME	FORECAST CONSTRUCTION COMPLETION	TOTAL FUNDING APPROVED	OVERALL PROGRESS (%)	PREVIOUS MONTH OVERALL RAG STATUS	CURRENT MONTH OVERALL RAG STATUS	CURRENT MONTH SCHEDULE STATUS	CURRENT MONTH BUDGET STATUS	CURRENT MONTH SCOPE STATUS	REASON FOR CURRENT MONTH OVERALL RED RAG STATUS OR OTHER ISSUES
30002	Northern	Te Toka Tumai Auckland	Starship Paediatric Intensive Care Unit (PICU) Bed Expansion and Atrium Redevelopment	Jan-26	\$48.0 m	87%	Green	Green	Green	Green	Green	
10045	Northern	Counties Manukau	Acute Radiology Unit Relocation, Middlemore Hospital	Mar-26	\$44.5 m	91%	Green	Green	Amber	Green	Green	
10247	Northern	Waitematā	Waitematā Infrastructure Services Programme (ISP) Tranche 1B	May-26	\$40.9 m	37%	Green	Green	Amber	Green	Green	
102101	Northern	Counties Manukau	Manukau Elective Surgical Hospital Building Recladding, Manukau Health Park	Apr-26	\$25.1 m	70%	Green	Green	Green	Green	Green	
30026	Northern	Te Tai Tokerau Northland	Kaitiaki Hospital Weatherightness Remediation	May-26	\$12.85 m	78%	Green	Green	Green	Green	Green	
10227	Northern	Te Tai Tokerau Northland	Regional Network Remediation	Nov-25	\$12.4 m	90%	Amber	Amber	Green	Green	Green	
10241	Northern	Waitematā	Waitākere – Electrical Infrastructure Upgrade	Dec-25	\$7.2 m	55%	Green	Green	Green	Amber	Green	
10079	Te Manawa Taki	Taranaki	Taranaki Base Hospital Redevelopment - Project Maunga - Stage 2	Dec-25	\$462.6 m	86%	Amber	Amber	Amber	Green	Green	
10073	Te Manawa Taki	Waikato	Adult Mental Health Facility Tranche 1	Jul-26	\$175.6 m	78%	Amber	Amber	Amber	Amber	Green	
102117	Te Manawa Taki	Taranaki	Linear Accelerators	Oct-25	\$56.1 m	88%	Green	Green	Green	Green	Green	
10075	Te Manawa Taki	Lakes	Mauri Ora - Mental Health and Addictions Inpatient Facility Replacement	Nov-25	\$50.0 m	72%	Amber	Amber	Red	Amber	Green	
10258	Te Manawa Taki	Tairāwhiti	Generator and Electrical Upgrade and Electrical Supply to Site	Dec-25	\$25.0 m	17%	Red	Red	Red	Red	Amber	
30003	Te Manawa Taki	Hauora a Toi Bay of Plenty	Te Whare Maiangi Remediation and Expansion - Tauranga	Jun-27	\$23.1 m	12%	Green	Green	Green	Green	Green	
10007	Te Waipounamu	Waitaha Canterbury	Christchurch Hospital Redevelopment, Tower 3	Oct-26	\$183.5 m	60%	Red	Red	Red	Red	Green	
10232	Te Waipounamu	Waitaha Canterbury	Hilmorton Acute Adult Facility	Sep-27	\$136.0 m	38%	Green	Green	Green	Green	Green	

DELIVER

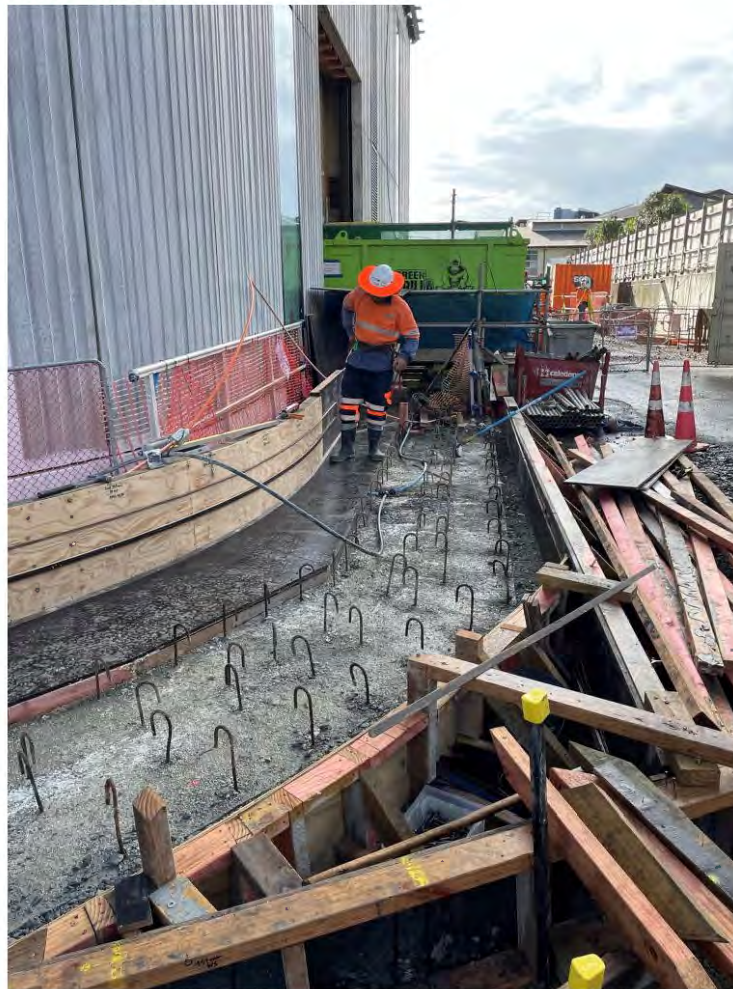
DELIVER	ID	REGION	LOCATION/ CAMPUS	PROJECT NAME	FORECAST CONSTRUCTION COMPLETION	TOTAL FUNDING APPROVED	OVERALL PROGRESS (%)	PREVIOUS MONTH OVERALL RAG STATUS	CURRENT MONTH OVERALL RAG STATUS	CURRENT MONTH SCHEDULE STATUS	CURRENT MONTH BUDGET STATUS	CURRENT MONTH SCOPE STATUS	REASON FOR CURRENT MONTH OVERALL RED RAG STATUS OR OTHER ISSUES
	10220	Te Waipounamu	Waitaha Canterbury	Compliance Works Programme	Jun-26	\$76.9 m	75%	Green	Green	Amber	Green	Green	
	10027	Te Waipounamu	Southern	Urgent Interim Works - Deferred Main, Gastroenterology, Audiology, ICU	Jun-25	\$32.6 m	98%	Green	Amber	Red	Green	Green	
	10112	Te Waipounamu	Te Tai o Poutini West Coast	Te Rau Kawakawa Buller Integrated Family Health Centre (IFHC)	Jan-26	\$27.3 m	94%	Green	Green	Green	Green	Green	
	30041	Te Waipounamu	Te Tai o Poutini West Coast	Mental Health Unit	Jul-26	\$27.0 m	53%	Green	Green	Green	Green	Green	
	10026	Te Waipounamu	Southern	Keeping the Lights on - Stage 2 (Dunedin Hospital Transition Programme - Maintenance) (Critical Infrastructure Works)	Dec-25	\$23.6 m	50%	Amber	Amber	Amber	Amber	Amber	
	100251	Te Waipounamu	Southern	New Dunedin Hospital, Inpatient Building	May-31	\$0.0 m	12%	No report	No report	No report	No report	No report	
	10025	Te Waipounamu	Southern	New Dunedin Hospital, Outpatient Building	Jul-26	\$0.0 m	66%	No report	No report	No report	No report	No report	
	10246	Te Waipounamu	Waitaha Canterbury	Christchurch Hospital Endoscopy Expansion	Sep-26	\$11.4 m	28%	Amber	Amber	Amber	Amber	Amber	
	30030	Te Waipounamu	Southern	Rural Primary Birthing Units in Central Otago	Mar-27	\$11.0 m	55%	Amber	Amber	Amber	Green	Amber	
	30020	Te Waipounamu	Nelson Marlborough	Nelson Hospital ED Reconfiguration	Apr-26	\$10.6 m	65%	Green	Green	Amber	Green	Green	
	30024	Te Waipounamu	Nelson Marlborough	Wairau Boilers	Sep-25	\$8.1 m	99%	Amber	Amber	Amber	Green	Amber	
						<b>\$3,385.9 m</b>							



**10001 Facilities Infrastructure Remediation Programme -  
Tranche 1, Auckland**  
*Helicopter lift*



**10056 Facilities Infrastructure Remediation Programme - Tranche 2,  
Auckland**  
*CP&T work in progress*



**10050 E Tū Wairua Hinengaro - Forensic Psychiatric Services Facilities Replacement, Mason Clinic, Auckland**  
*Western courtyard terrace screening*



**10073 Te Pae Tawhiti Adult Mental Health Facility, Waikato Hospital**  
*Level 2 preparation of concrete pour*

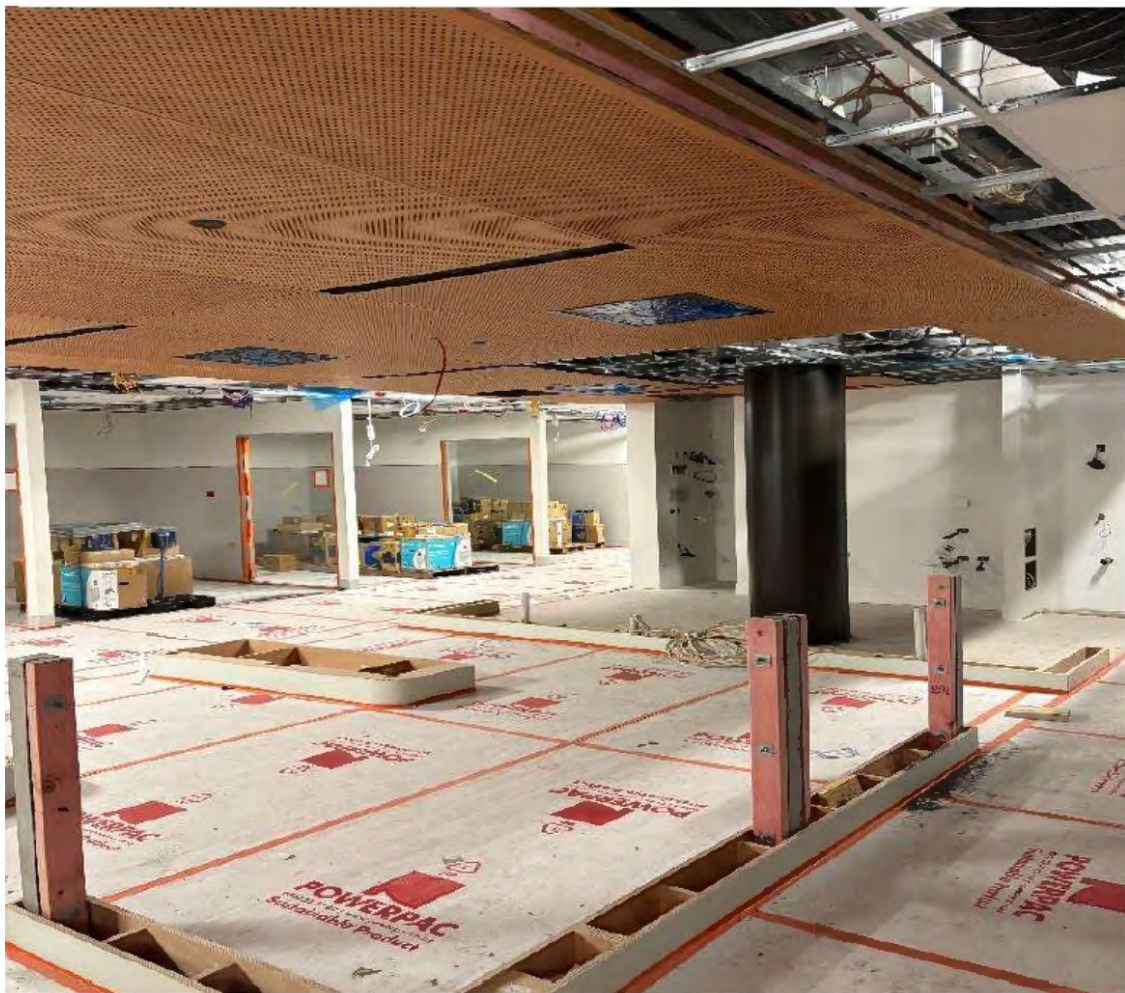


**10075 Mauri Ora - Mental Health and Addictions Inpatient Facility Replacement**



**10079 Taranaki Base Hospital Redevelopment -  
Project Maunga - Stage 2**

*Level 1 ICU*



**10204 Manaaki Hōhonu - Construction of Inpatient ward and ICU,  
Waitākere Hospital**

*Main works progress, western view*



**102117 Taranaki Base Hospital Linear Accelerators**  
*Taranaki Cancer Centre entrance*



**10026 Dunedin Hospital Critical Infrastructure Works**  
*Oncology roof replacement*



**30002 Starship Paediatric Intensive Care Unit (PICU) Atrium Redevelopment**



**102101 Manukau Elective Surgical Hospital Building Recladding, Manukau Health Park**



102116 Radiation Oncology Project, Whangārei Hospital

